

GRIZZLIES

OF THE WEEK

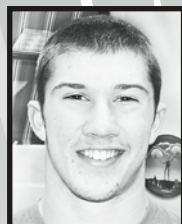


Emily Cutler Volleyball

Senior / Coach: Ben Patterson | Parents: Eric & Lisa



It has been an honor to coach Emily over the past four years because of her strong work ethic, "team first" attitude, athletic talent, and admirable character. This year, Emily has been our most versatile player, stepping up and playing four of the six positions on the court. She is one of our top serve receivers as well as being solid on defense. She has also contributed with her play as an outside hitter. Emily has earned the respect of her teammates and coaches not only for her approach to athletics, but for her encouraging and kind disposition. Her character, compassion, and positive attitude are qualities that will define her long after her playing days are over.



Tanner Scanlon Football

Sophomore / Coach: Don Rutschman | Parents: Bruce & Lisa



Tanner made 2 crucial plays in the Grizzlies 34-31 win over Glencoe last Friday. With Glencoe on the McMinnville 1 yard line, Tanner intercepted a Glencoe pass that stopped what could have been a touchdown. He also made a great catch in the end zone for a McMinnville touchdown from Gage Gubrud in the first half. Tanner is also a snapper on the punt team and plays on virtually every special team the Grizzlies have. Tanner has done an excellent job as a sophomore and is gaining confidence by the week as the football team nears the end of the season and approaches the playoffs.



Lucy Bellville Girls' Soccer

Junior / Coach: Adam Howard | John & Cindy



Lucy has had a tremendous season so far. She is one of the hardest working players each and every game. Her determination has helped her become a dangerous, offensive threat against her opponents. As a team captain, she has taken on many responsibilities and lived up to each task. Her leadership has been exemplary. Great job, Lucy, and keep up the good work!



Tyler Harris Boys' Cross Country

Senior / Coach: Vic Downs | Parents: Tim & Caroline



At the Newberg meet, Tyler came through for the Grizzlies by running his best time of the year. His 17:53 was a 19 second improvement! Tyler helps makes this a varsity squad that will compete for the Pacific Conference Championship. Good luck, Tyler!



Ashley Godwin Girls' Cross Country

Senior / Coach: Vic Downs | Parents: Erik & Tenille



At Newberg, Ashley ran 19 seconds faster than ever before and made the varsity team for the Pacific Conference Championships. It was Ashley's first year of running cross country and she did great! Good luck at districts!

These Local Sponsors Support Grizzly Athletics



Rich Utti, State Farm Ins.
620 SW Linfield Ave. • McMinnville
503-472-6328

Timmreck & McNicol Jewelers
428 NE Third Street • McMinnville
503-472-6812

Corrigan Wickman Advisory, LLC.
Registered Financial Adviser
400 NE Second Street • McMinnville
503-472-4631

Andrew Physical Therapy
2025 NE Baker St., Suite A
McMinnville • 503-435-1900

Edward Jones Investments
715 NW Adams Street • McMinnville
503-472-0444
Thad & Kristine Brill

Papa Murphy's
470 N Highway 99W • McMinnville
503-472-2536

Union Block Coffee
403 NE 3rd Street • McMinnville
503-472-0645

Chuck Colvin Auto Center
1925 N Highway 99W • McMinnville
503-472-6124

Oregon Lithoprint, Inc.
1315 NE Miller Street • McMinnville
503-472-5115

News-Register
611 NE 3rd St. • McMinnville
503-472-5114

Please patronize these outstanding sponsors that provide this space to give recognition to the finest athletes at McMinnville High School.